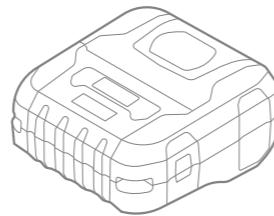
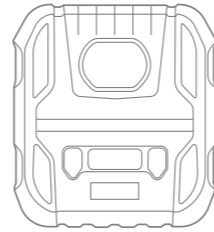


3R20 Mobile Direct Thermal Bar Code Printer

zenpert

PRINTER MODEL	3R20
Resolution	8 dots/mm (203 DPI)
Printing method	Direct Thermal
Max. print speed	50.8 mm (2")/ second
Max. print width	72 mm(2.83")
Max. print length	2,794 mm (110")
Enclosure	PC+ABS plastic
Physical dimension	112 mm (W) x 62 mm (H) x 122 mm (D) 4.41"(W) x 2.44"(H) x 4.80"(D)
Weight	355 g (0.78 lbs.)
Label roll capacity	50 mm (1.96") OD
Processor	32-bit RISC CPU
Memory	· 16 MB Flash memory · 64 MB SDRAM
Interface	· USB 2.0 · Internal Bluetooth 4.2
Power	· Input : AC 100-240V, 0.35A, 50-60Hz · Output: DC 5V, 2A
Operation switch, button, LCD	· 3 buttons (pause/feed, on/off, cover-open) · 1 LCD (OLED mono-LCD, 128*32 pixels)
Sensors	· Transmissive gap sensor · Black mark reflective sensor · Head open sensor
Internal fonts	· 8 alpha-numeric bitmap fonts · Windows font can be downloaded by software
Bar code	· 1D barcode Code 128UCC, Code 128 subsets A, B, C, EAN128, Interleaved 2 of 5, Interleaved 2 of 5 with check digit, Code 39, Code 39 with check digit, Code 93, EAN13, EAN8, UPCA, UPCE, EAN and UPC 2 (5) digits add-on, Codabar, Postnet, MSI, MSI with check digit, PLESSEY, China post, ITF14, Code 11, TELEPEN, TELEPENN, PLANET, Code49, Deutsche Post Identcode, Deutsche Post Leitcode, LOGMARS · 2D barcode GS1 DataBar, GS1 DataMatrix, Maxicode, AZTEC, PDF417, QR Code, Micro PDF 417
Font and barcode rotation	0°, 90°, 180°, 270°
Printer language	TSPL-EZC (Compatible with EPL, ZPL, ZPL II, CPCL)
Media type	Continuous, die-cut, black mark (outside wound)
Media width	25.4 ~ 80 mm (1" ~ 3.14")
Media thickness	0.06 ~ 0.20 mm (2.36 ~ 7.87 mil)
Media core diameter	12.7 mm (0.5")
Label length	15 ~ 2,794 mm (0.59" ~ 110")
Environment condition	Operation: 0 ~ 40°C, humidity (non-condensing) 10 ~ 85% Storage: -20 ~ 60°C, humidity (non-condensing) 5 ~ 90%
Safety regulation	BIS, WPC, KC, MIC, SIRIM, NBTC, SDPPI
Environmental concern	Comply with RoHS, REACH, WEEE
Accessories	· Quick start guide · USB cable · External universal switching power supply · Fixing tab x 2



3R20

Mobile Direct Thermal Bar Code Printer

PERFECT ON-THE-GO PRINTING



zenpert

zenpert, Your Printing Specialist

The tracking and management of barcode label is one of the essential elements for the smooth operation of a company, small and large.

Therefore, a business owner always wants to find a barcode printer with high performance, while employees of a company look forward to quick smart printing.

Less is More

A strong belief in this concept gave rise to zenpert. The name of "zenpert" originates from "expert" and implies the expertise in providing premium service to customers. In its Chinese name, the character "擘" (pinyin: bo) means "thumb" and implies the proficiency in strategic planning and symbolizes for the position as an industry leader.

zenpert has a thorough understanding of customers' needs in various markets and has become the best business partner for its customers on the strength of advanced technology, unsurpassed quality and considerate service.

zenpert is backed up by the first specialized barcode equipment manufacturer in Taiwan which has produced and sold barcode printers all over the world.

In spite of the fast changing market condition, zenpert will provide its business partners with the best products and services on the basis of robust, swift and flexible DNA plus proficient technical team, and at the same time instill fresh air and vitality into the barcode printers market.

Brand Philosophy

We win when our customers win!

We are spurred on to further progress by the wish to help our customers grow their businesses and establish win-win partnership with them.

Advantages



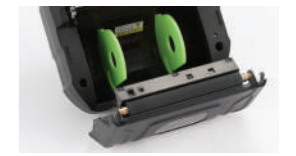
Premium, reliable, compact and stable quality



Two media sensor methods- supports black mark and die-cut label printing



Easy-to-read LCD display



Large supplies capacity to satisfy high printing volume demands

Feature

- User friendly design for easy media installation
- Supports multiple media types
- High speed USB 2.0 and stable Bluetooth 4.2 communication
- Built-in 16 MB Flash, 64 MB DRAM large memory capacity
- Automatic media sensor calibration
- Media window design - easily check supplies stock status
- High-efficiency battery keeps long lasting printing

Application market

- Retail Product Labeling
- Receipt/Coupon Printing
- Table Service Printing
- Mobile Receipt Printing
- Express Delivery Printing
- Medical Specimen Labeling
- Medical Record Labeling



User friendly design



Varied printing application



Reliable & stable



Power saving



Clear print quality

